



DETROIT PROCESS MACHINERY

tel. (248) 251-5692

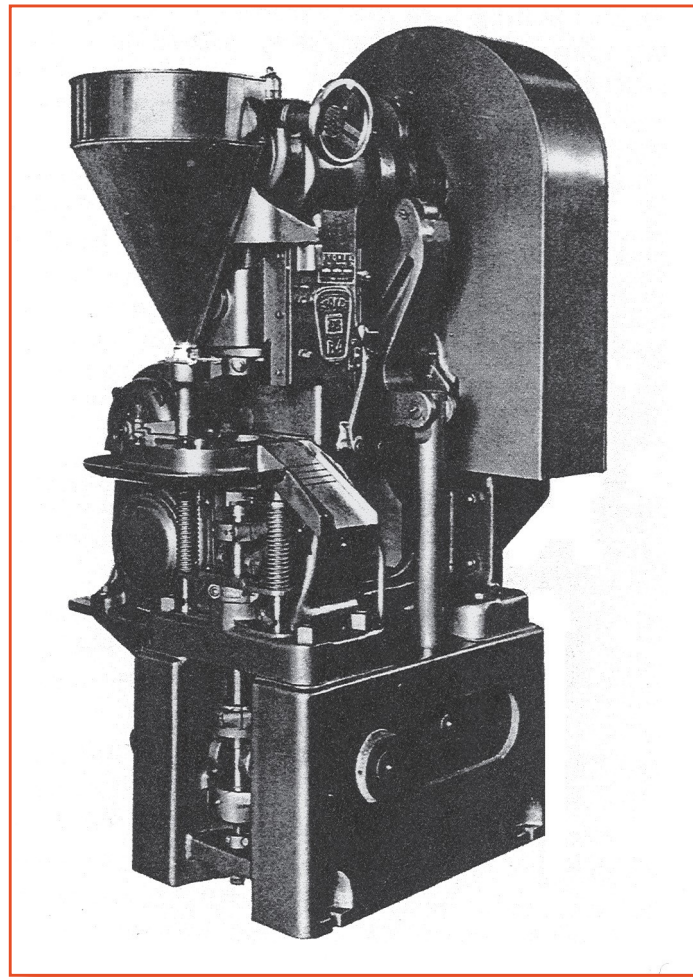
Email: sales@detroitprocessmachinery.com

www.detroitprocessmachinery.com

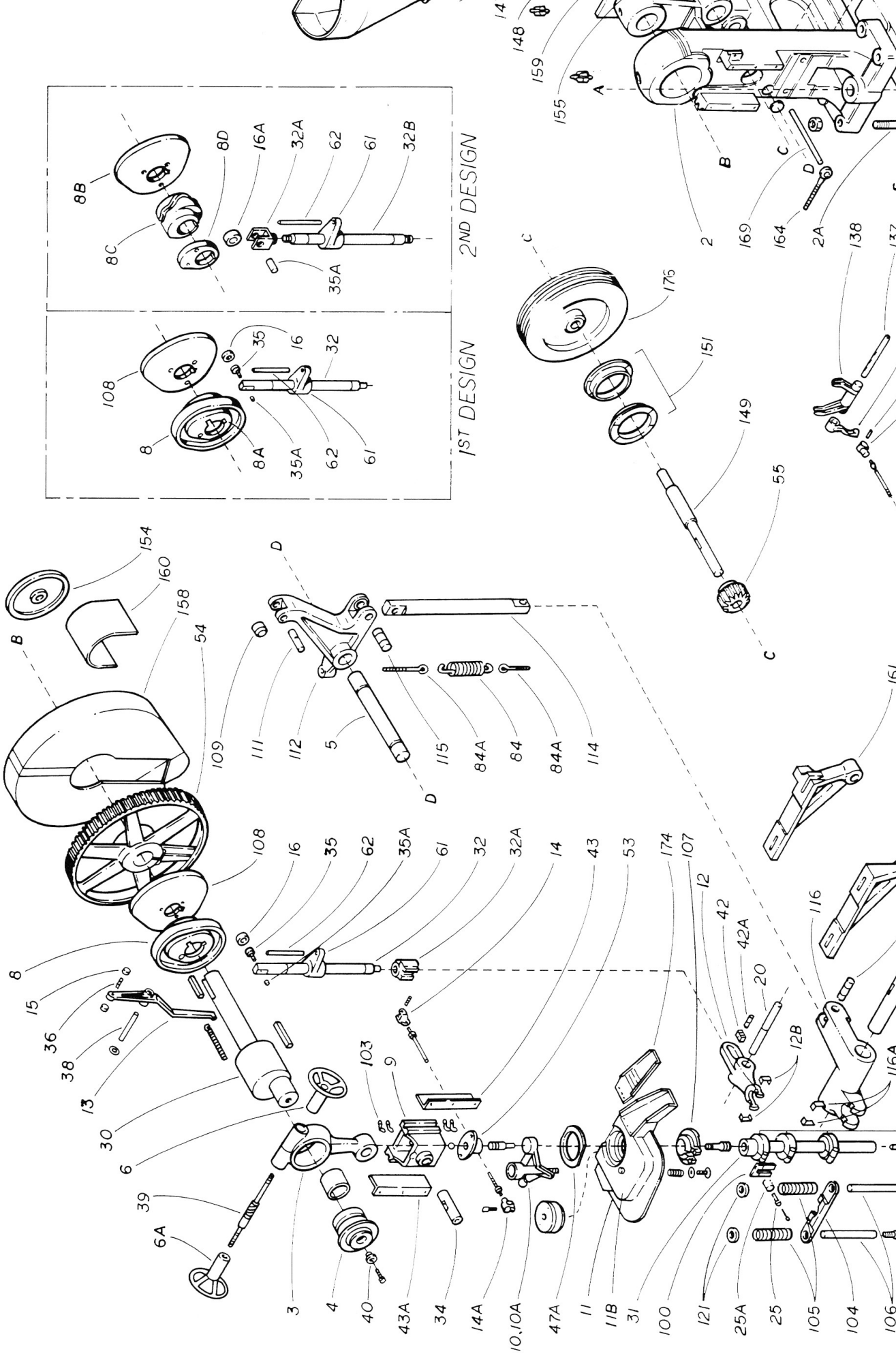
REPLACEMENT PARTS

STOKES POWDER PRESS

MODEL R-4, 526, R*, 525*

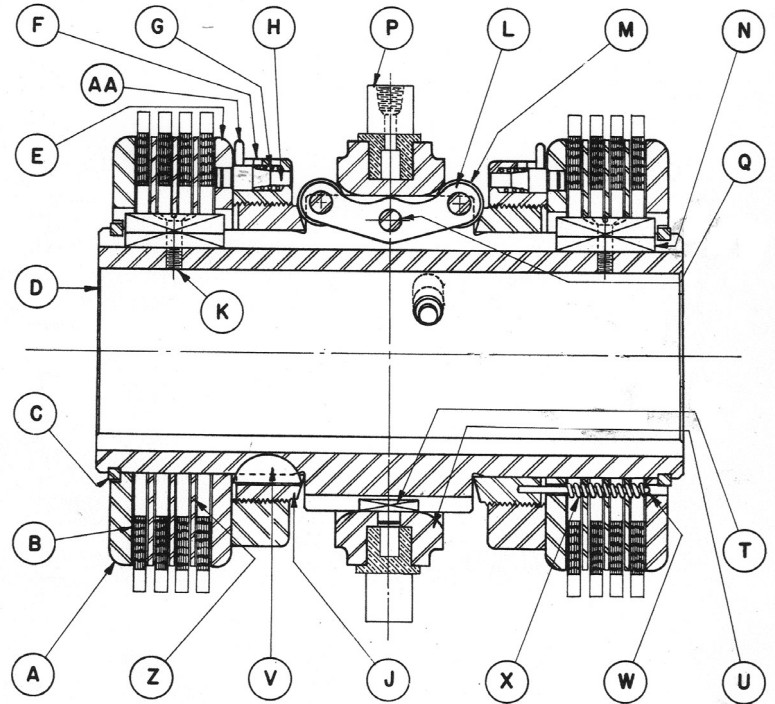


* Some parts are interchangeable with R & 525 Models



Index	Description
61	Ejection Connecting Rod Guide
62	Ejection Connecting Rod Guide Pin
84	Cam Lever Spring
84A	Cam Lever Spring Eye Bolt
100	Plunger Guide
103	Crosshead Dust Seal Plate
104	Pull Down Plate
105	Pull Down Spring
106	Die Table Support Rod
107	Die Table Bushing
108	Compression Cam
109/110	Compression Cam Roller w/bushing
111	Compression Cam Roller Pin
112	Pressure Cam Lever
114	Pressure Cam Lever Connecting Rod
115	Pressure Cam Lever Conn. Rod Pin
116	Pressure Rocker Lever
116A	Pressure Rocker Lever Inserts
118	Pressure Rocker Lever Shaft
120	Core Rod Holder
121	Adjusting Nut-Pull Down Spring
122	Adjusting Nut-Table Support
130	Shift Handle
131	Shift Handle Shaft
132	Shift Handle Shaft Lever
133	Shifter Rod Clevis
134	Shifter Rod Clevis Pin
136	Clutch Shifter Lever
137	Clutch Shifter Yoke Shaft
138	Clutch Shifter Yoke
141	Hopper and Bracket
147	Outboard Bearing Support
148	Bearing Support Bracker
149	Clutch Shaft
151	Clutch Drive Ring
154	Handwheel
155	Plain Cartridge Bearing Hous.
156	Flanger Cartridge Bearing Outbd.
158	Gear Guard
159	Clutch Shifter Yoke Bracket
160	Clutch Guard
161	Drive Unit Bracket-Adj.
162	Drive Unit Bracket
163	Shaft0Drive Unit Bracket
164	Eye Bolt-Drive Unit Bracket
169	Eye Bolt Shaft-Drive Unit Bracket
174	Adjustable Chute
176	Flywheel

Clutch Parts Available



Item	Description	Qty. Req.
F	Adjusting Ring	2
P	Cone Collar	1
U	Engaging Cone	1
B	Driving Plate Fiber	10
Z	Drive Plate Metal	8
J	Roller Ring	2
E	Lock Plate	2
T	Cone Key	1
W	Release Spring Pin	6
Y	Release Spring	6
Q	Finger Lever Pin	3
A	Back Plate	2
G	Adjusting Lock Pin Spring	2
H	Adjusting Lock Pin	2
M	Roller for Fingers	6
C	Snap Ring	2



Tom Suhy

"Experienced...Proven...Ready to Serve"

tel. (248) 251-5692

Email: sales@detroitprocessmachinery.com

www.detroitprocessmachinery.com